

# Galveston Central Appraisal District

73-B

74-A

74-B

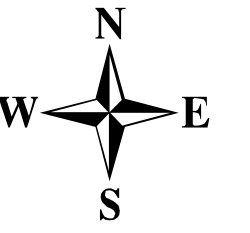
73-D

74-D

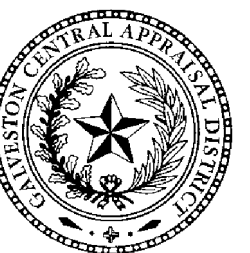
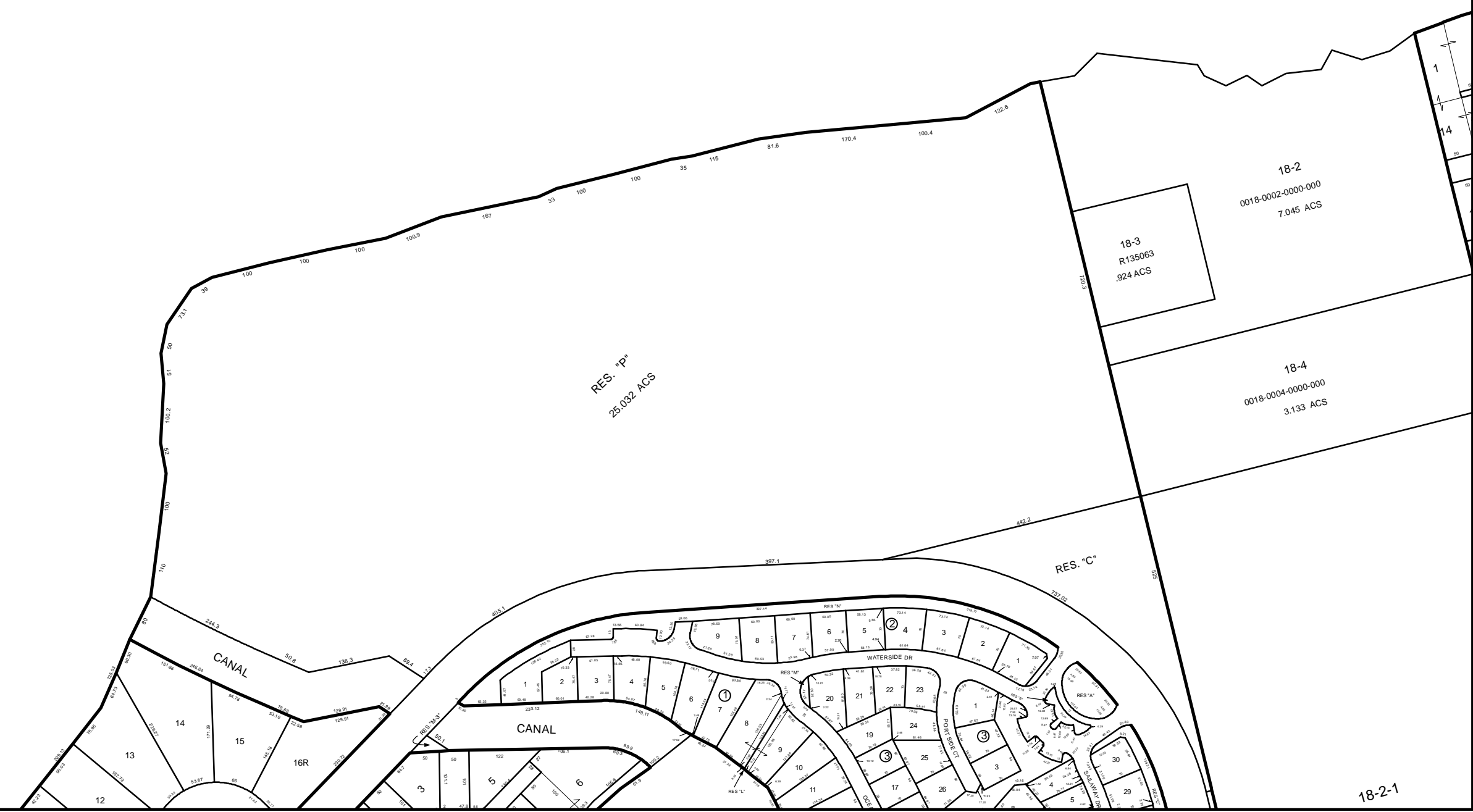
96-B

97-A

97-B



SCALE 1" = 200'  
Sep 19, 2011



Geospatial or mapdata maintained by the Galveston Central Appraisal District is for informational purposes and may not have been prepared for or be suitable for legal, engineering, or surveying purposes. It does not represent an on-the-ground survey and only represents the approximate relative location of property boundaries.